



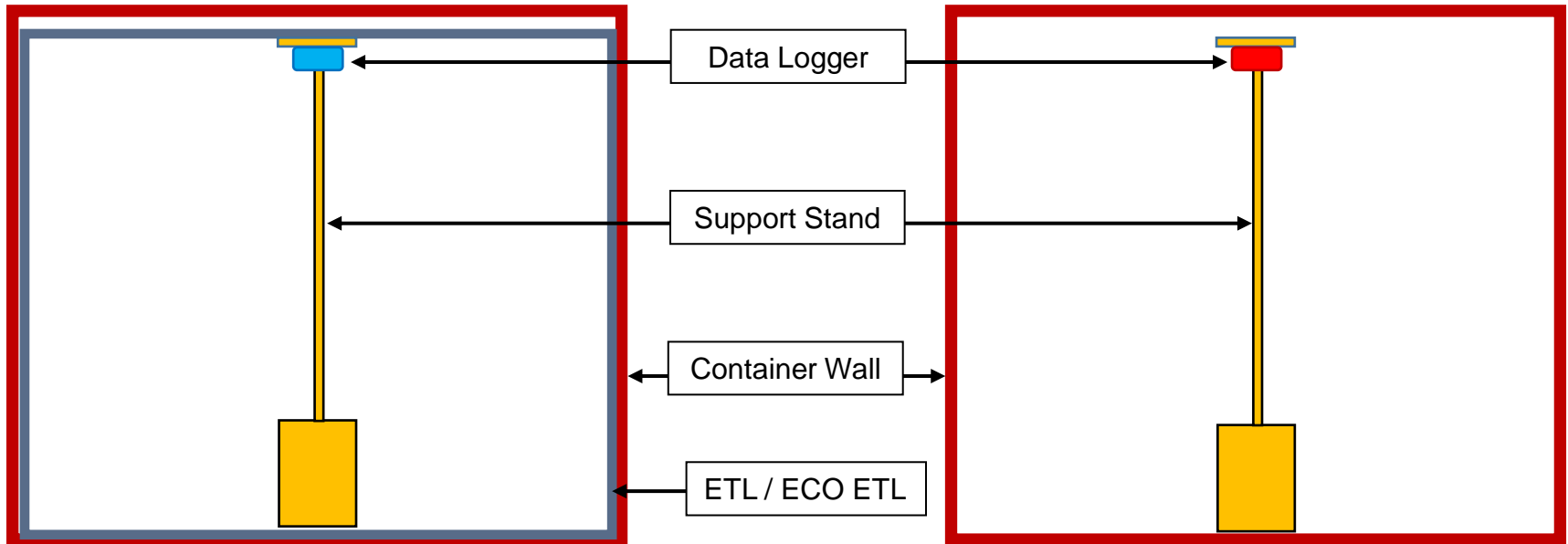
Comparison Trial of Containers With ECO ETL, With & Without ETL



Venue: Port Klang (Malaysia)
Trial Date: 22 – 26 July 2015



Location of Temperature Data Loggers



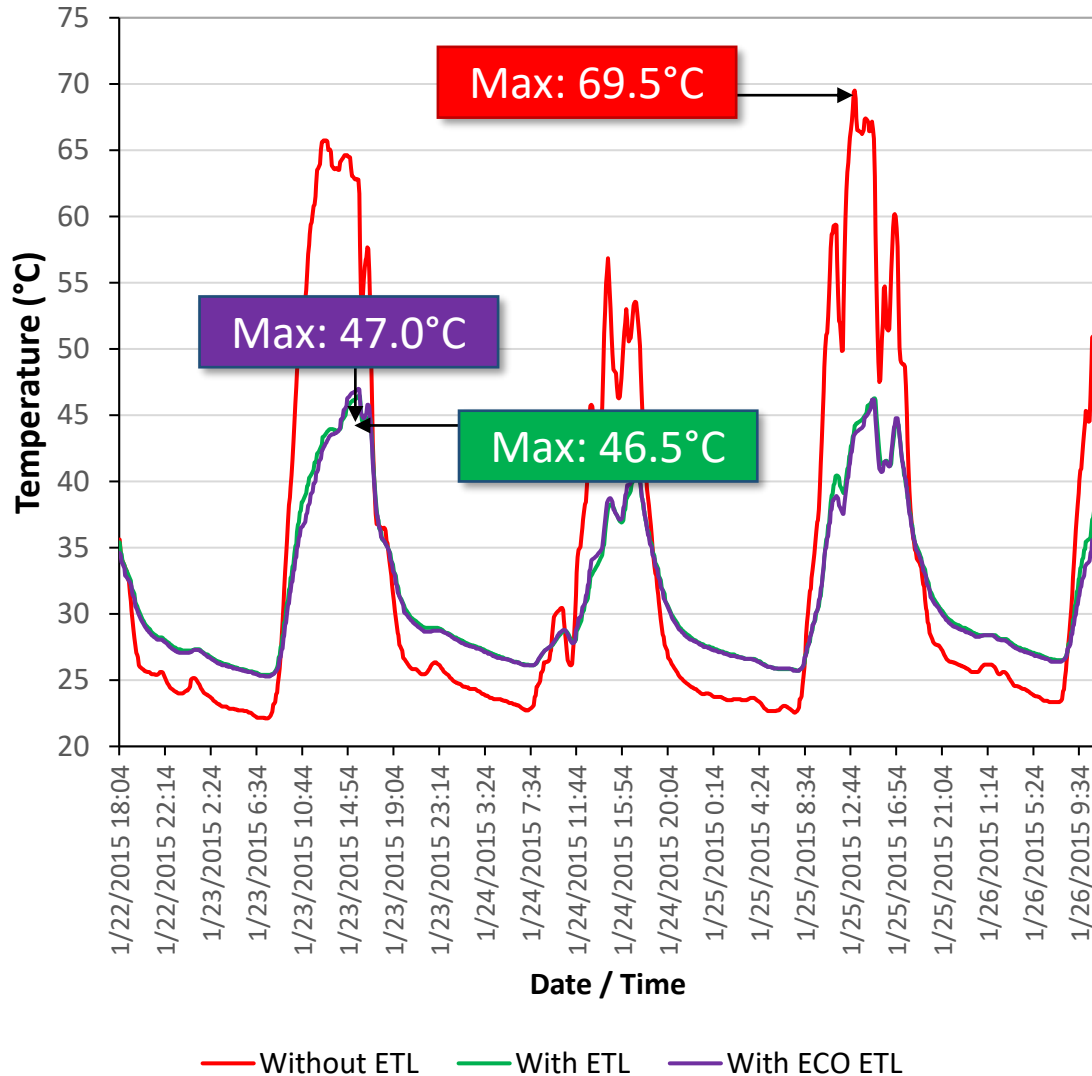
Containers with ETL / ECO ETL

Container without ETL

Containers with ECO ETL, with ETL and without ETL were placed side by side in an open field for 5 days. Each container is equipped with temperature data loggers placed at the same location.



Comparison of Temperature In Containers



Conclusion

Both ETL and ECO ETL is able to effectively reduce temperature spikes or fluctuations inside the container by means of high reflective enclosed air spaces.

The maximum temperature for container without ETL is 69.5°C whereas containers with ETL and ECO ETL are only 46.5°C and 47.0°C respectively.

ECO ETL can be fully recycled into useful plastic resins.



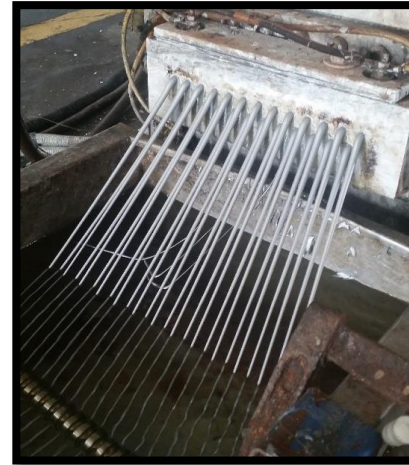
ECO ETL Recycling Process



1) Crushing



2) Melting



3) Extrude



4) Palletized

After removing the accessories from the ECO ETL, it can be recycled by first crushing the whole liner into small pieces with a crusher machine. Then, the crushed pieces can be melted with heating, and then extrude the molten into cooling water bath to solidify it. Finally, it is cut into the form of pallet resins, which can be used for various application such as household appliances, plastics furniture and others.